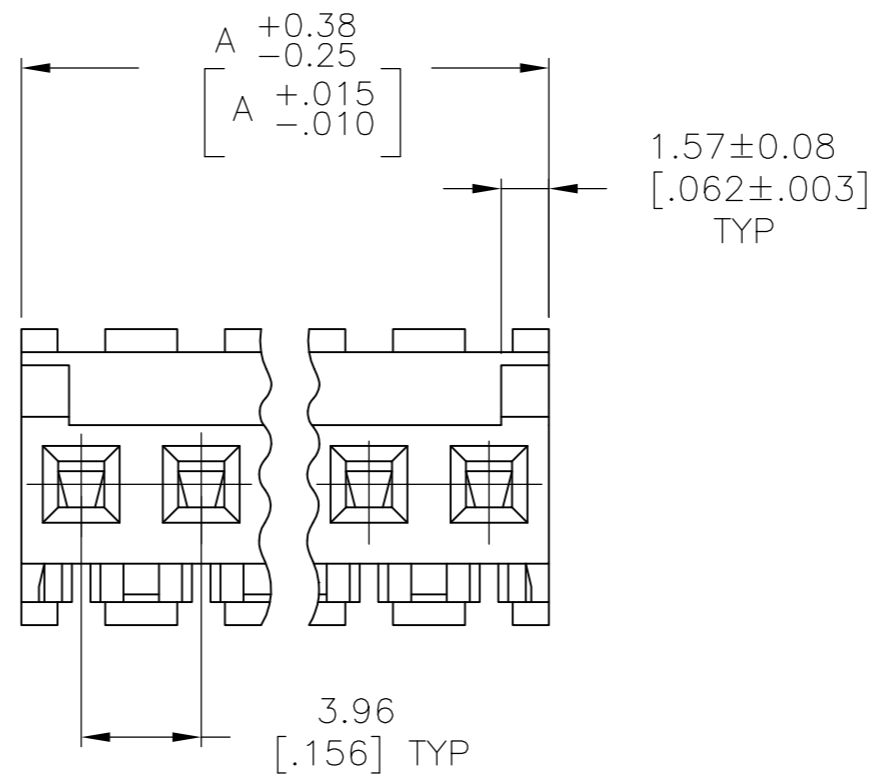
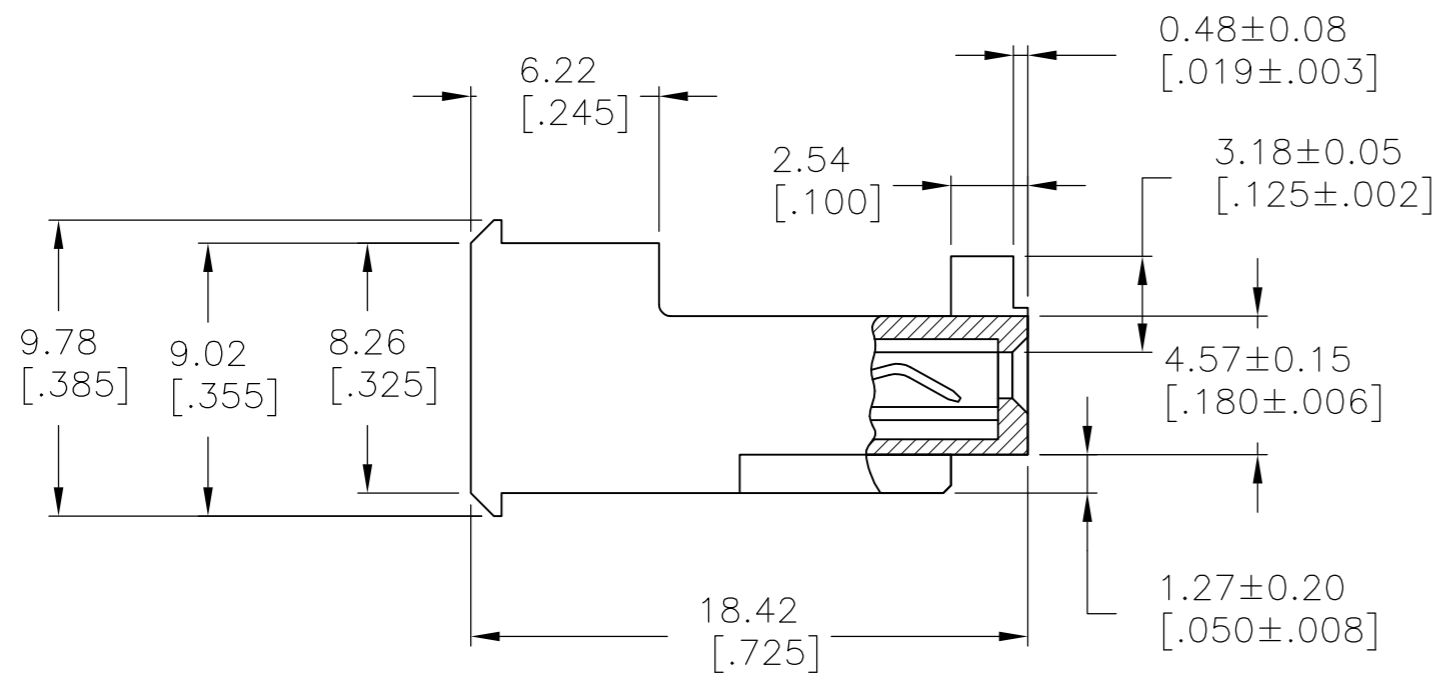
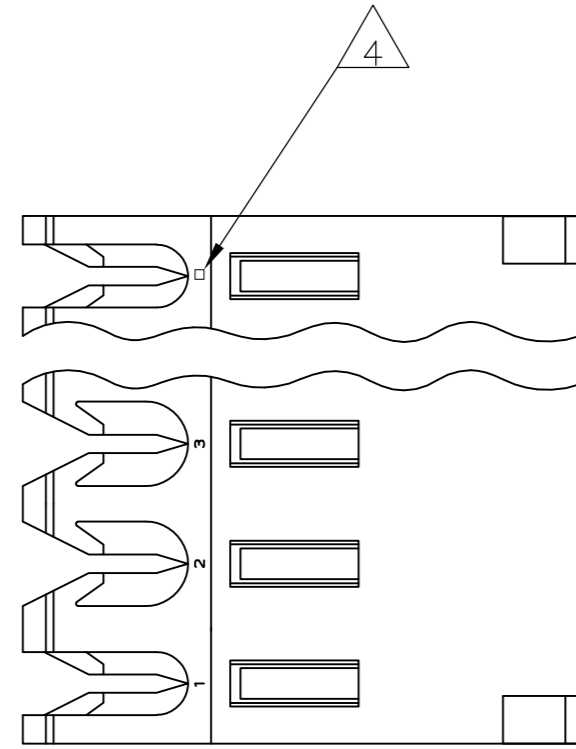


THIS DRAWING IS UNPUBLISHED. RELEASED FOR PUBLICATION
 © COPYRIGHT BY TYCO ELECTRONICS CORPORATION. ALL RIGHTS RESERVED.

LOC	DIST	REVISIONS					
		P	LTR	DESCRIPTION	DATE	DWN	APVD
CM	54	B		ECO-07-012888	22JUN07	KW	DB



1 MATERIAL: CONNECTOR - NYLON UL94V-0 (BLACK).
 CONTACTS - 0.30[.012] THICK COPPER ALLOY
 BRIGHT TIN-LEAD 0.00203[.000080] MIN THICK FOR CONTACTS
 644570-2 THRU 1-644570-4
 MATTE WHISKER MITIGATED TIN 0.00203[.000080] MIN THICK FOR
 3-644570-2 THRU 4-644570-4

- 2. CONTACTS ACCEPT 18 AWG WIRE WITH 2.41[.095] MAX INSULATION DIAMETER.
- 3. CONTACTS MUST ACCEPT 1.14±0.03 [.045±.001] SQUARE POST AND REMAIN LOCKED IN POSITION.
- 4. IDENTIFICATION NUMBER FOR LAST CIRCUIT MAY NOT APPEAR ON ALL ASSEMBLIES.
- 5. DIMENSIONS IN BRACKETS ARE IN INCHES.
- 6. HOUSING FEATURES ARE: FEED-THRU WITHOUT LOCKING RAMP AND WITH POLARIZING TAB.

47.55 [1.872]	12	4-644570-2
43.59 [1.716]	11	4-644570-1
39.62 [1.560]	10	4-644570-0
35.66 [1.404]	9	3-644570-9
31.70 [1.248]	8	3-644570-8
27.74 [1.092]	7	3-644570-7
23.77 [.936]	6	3-644570-6
19.81 [.780]	5	3-644570-5
15.85 [.624]	4	3-644570-4
11.89 [.468]	3	3-644570-3
7.92 [.312]	2	3-644570-2
47.55 [1.872]	12	1-644570-2
43.59 [1.716]	11	1-644570-1
39.62 [1.560]	10	1-644570-0
35.66 [1.404]	9	644570-9
31.70 [1.248]	8	644570-8
27.74 [1.092]	7	644570-7
23.77 [.936]	6	644570-6
19.81 [.780]	5	644570-5
15.85 [.624]	4	644570-4
11.89 [.468]	3	644570-3
7.92 [.312]	2	644570-2
DIM A	NO OF CIRCUITS	PART NO

METRIC

THIS DRAWING IS A CONTROLLED DOCUMENT.		DWN	-	Tyco Electronics Corporation Harrisburg, Pa 17105-3608	
DIMENSIONS: mm [INCHES]		CHK	-	NAME	
TOLERANCES UNLESS OTHERWISE SPECIFIED:		APVD	-	PRODUCT SPEC	
0 PLC ± -		108-1051		APPLICATION SPEC	
1 PLC ± -		114-1020		SIZE	
2 PLC ± -		WEIGHT		CAGE CODE	
3 PLC ± 0.13 [.005]		CUSTOMER DRAWING		DRAWING NO	
4 PLC ± -		SCALE 4:1		SHEET 1 OF 1	
ANGLES ± -		REV B		RESTRICTED TO	
FINISH		A2 00779 C=644570		-	